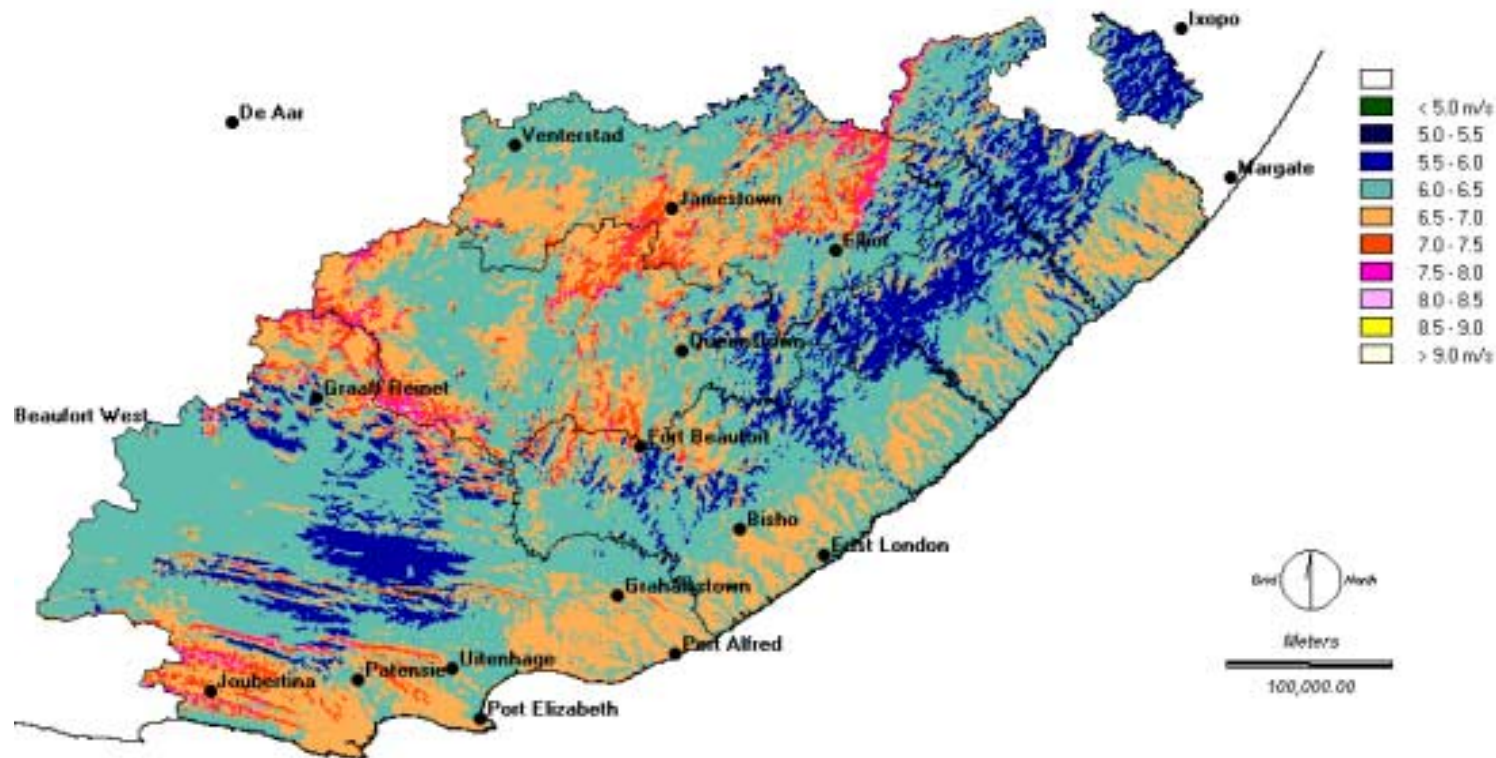


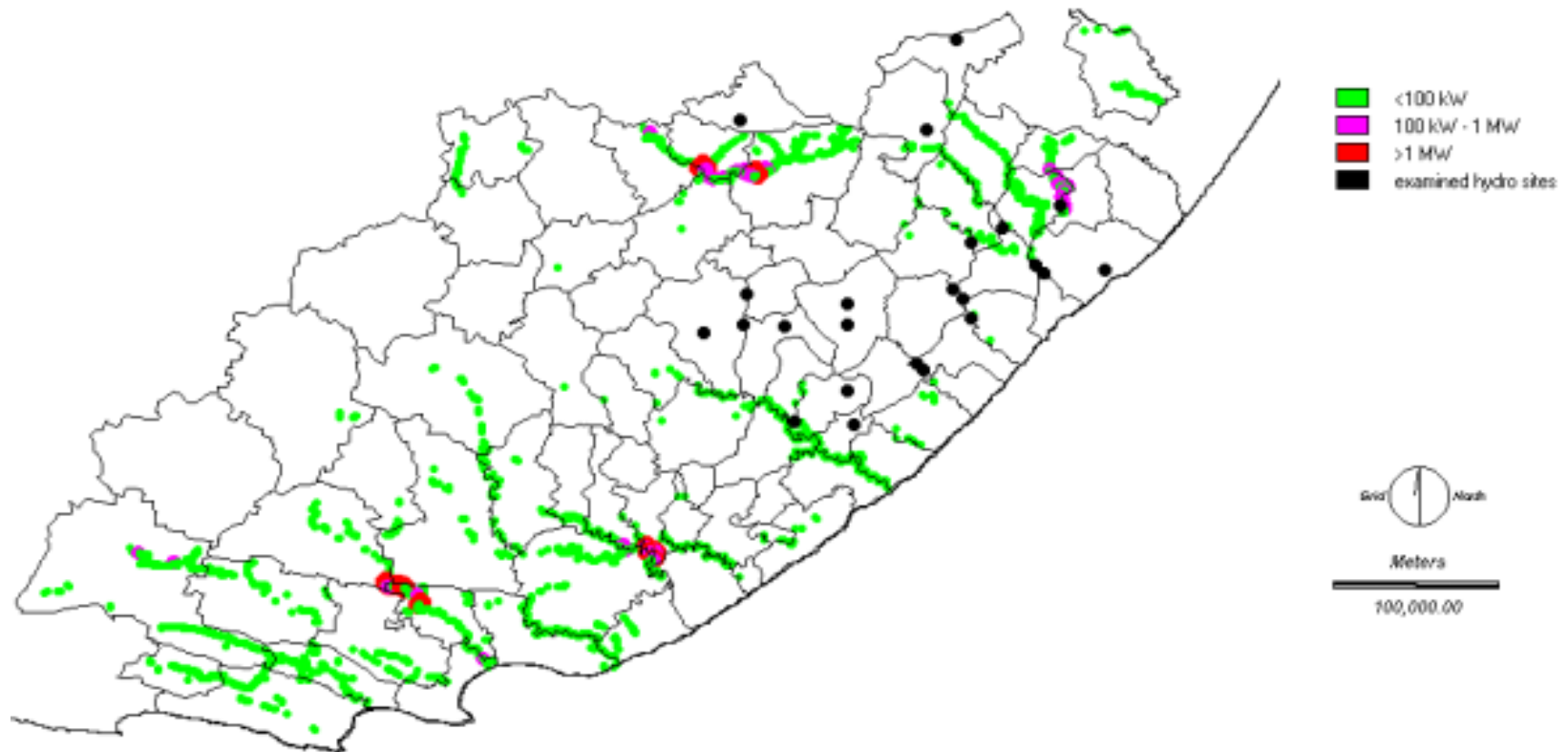
Integrating analytical tools into development planning

- **Much information is readily available in electronic format**
 - Natural resources
 - Physical data e.g. rainfall, conservation areas
 - Social/economic data e.g population, water supply,
- **Can Information and Communication Technologies be used to assist in economic planning?**

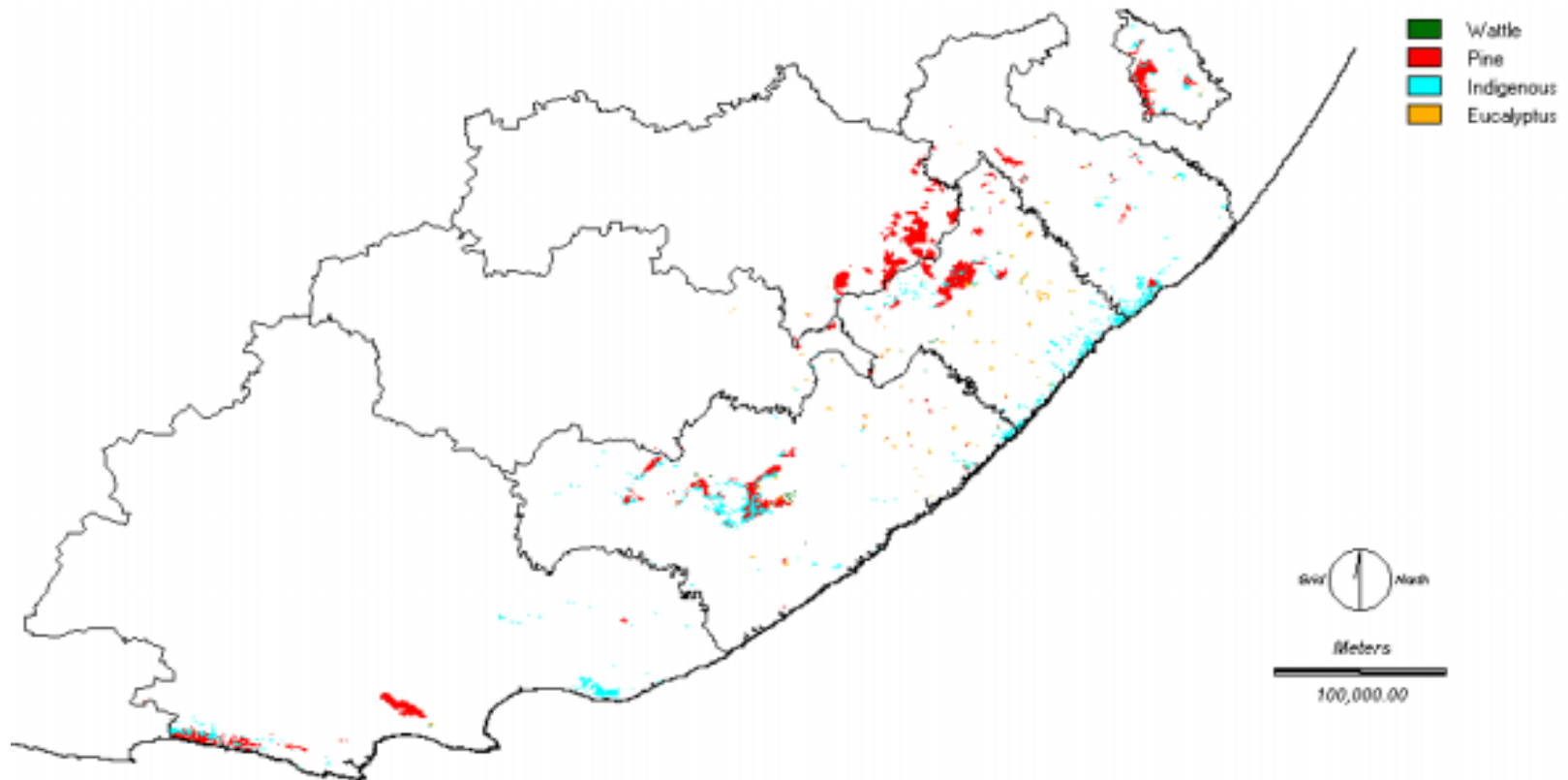
Estimated 60 m mean wind speeds



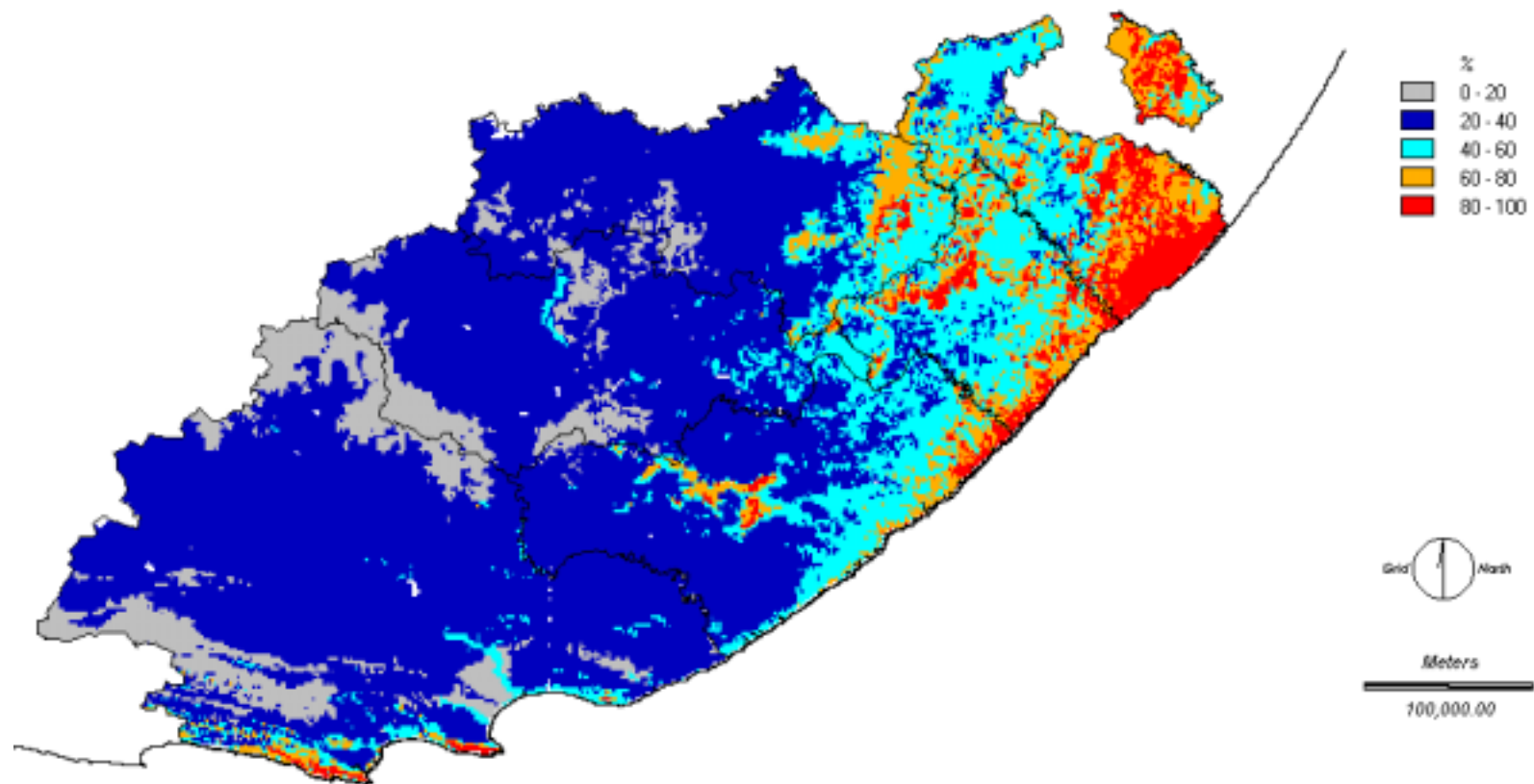
Small hydro sites



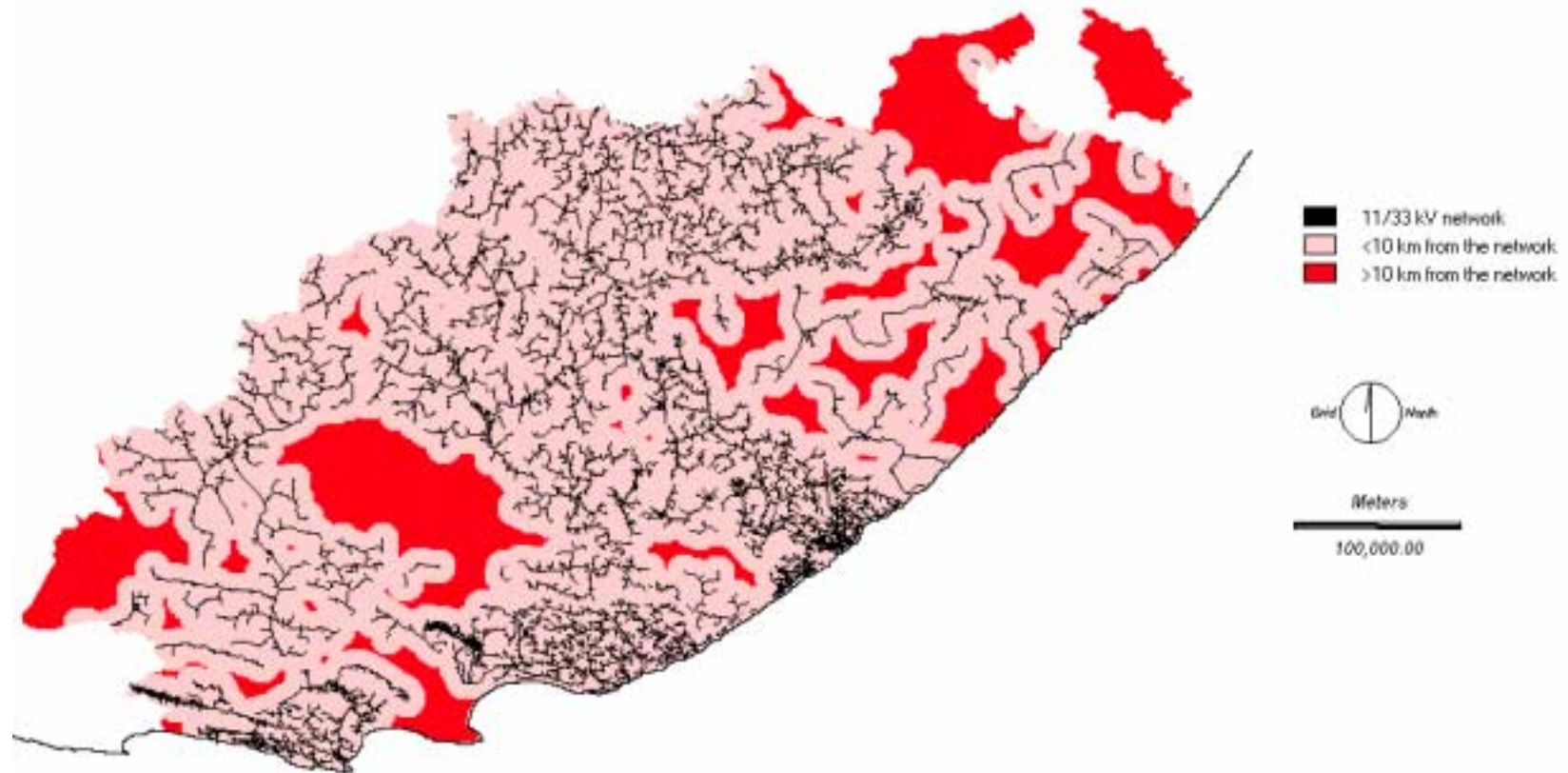
Existing forestry



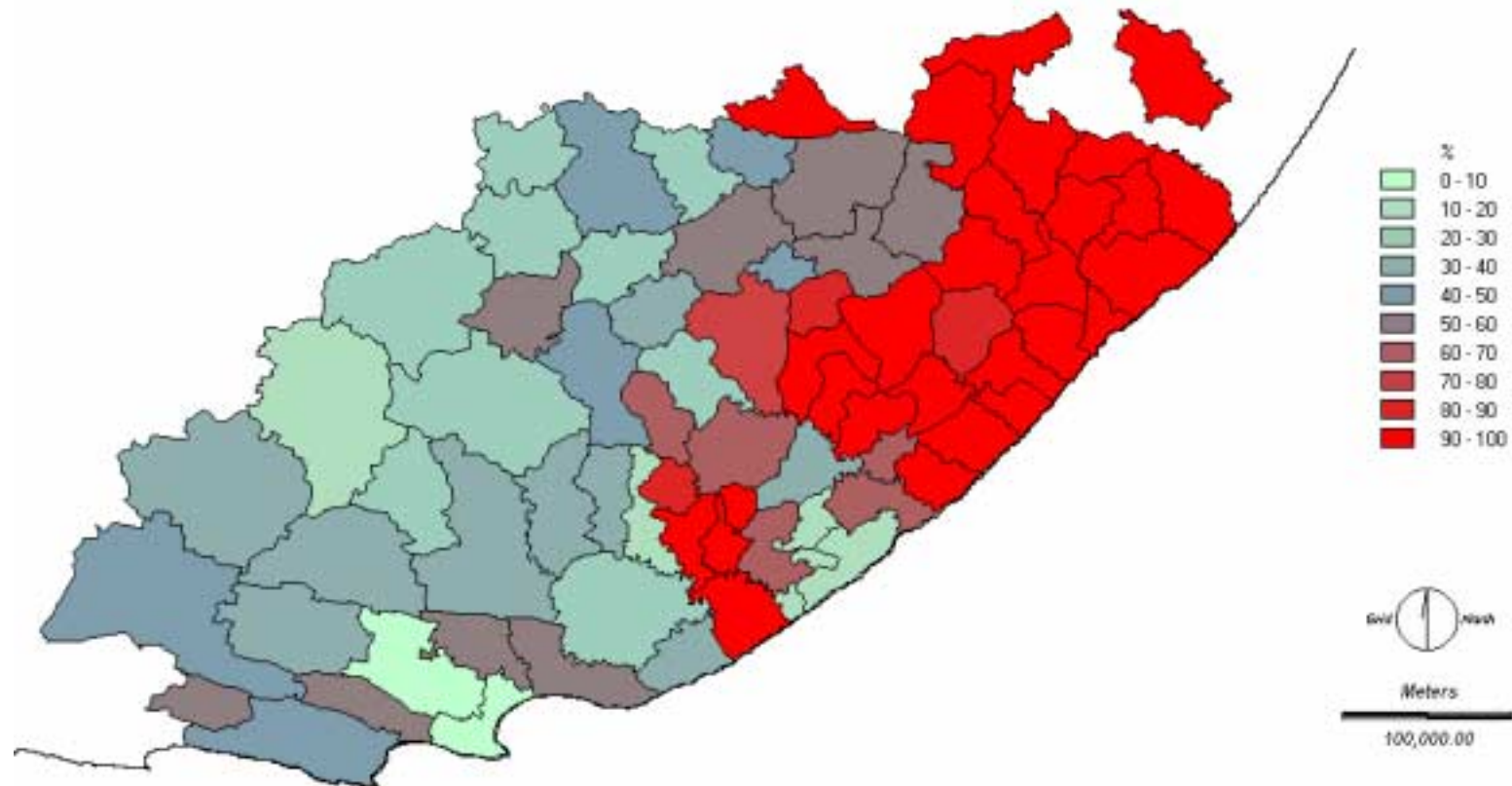
Potential for pine



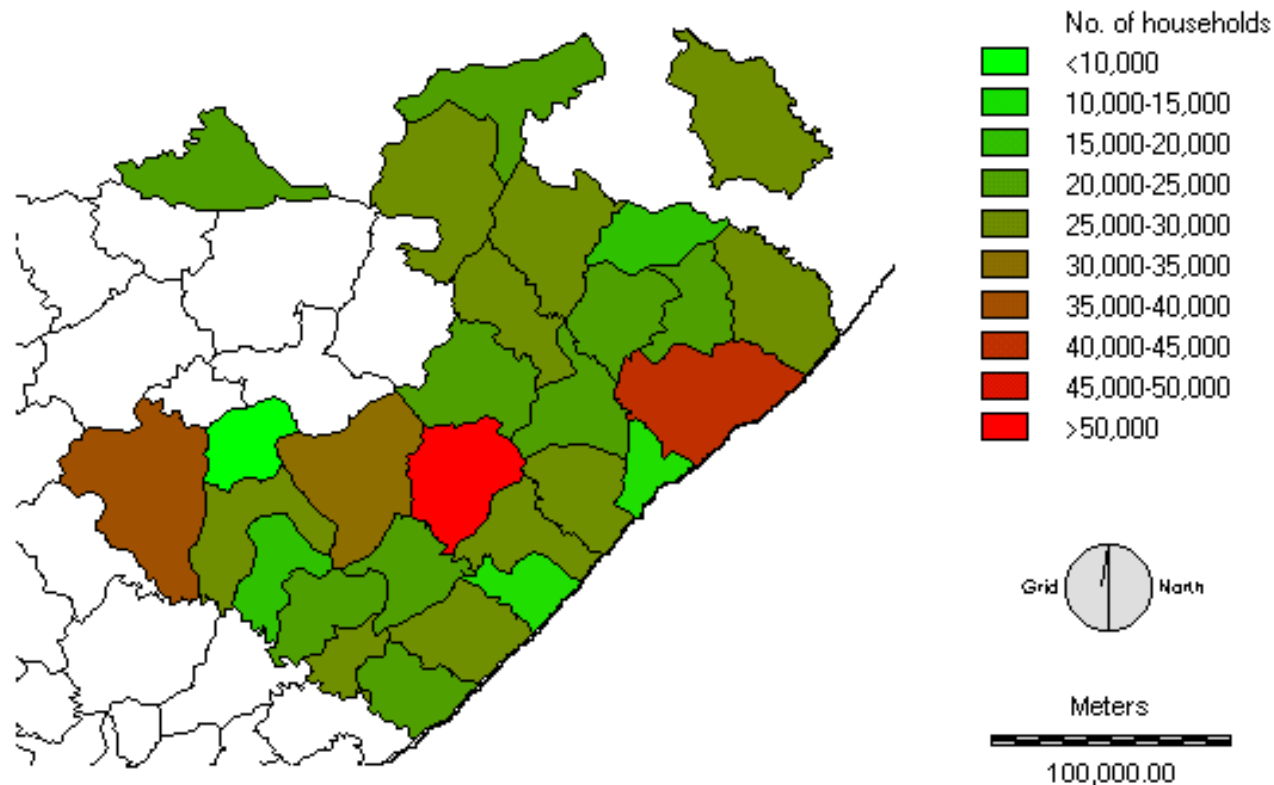
Distances from existing Eskom grid



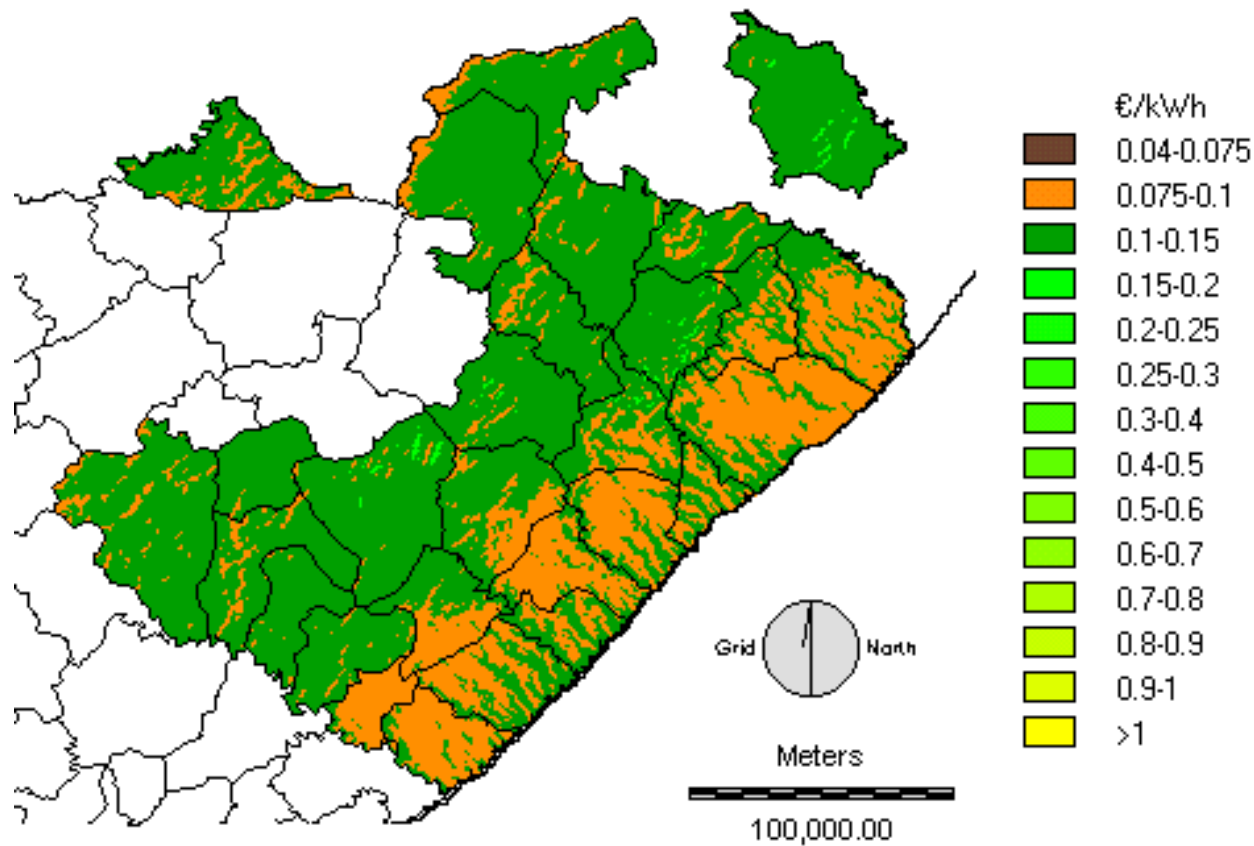
Proportions of Magisterial District populations that are rural



Non-electrified households per Magisterial District in year 2000



Unit electricity costs - scenario (b)



Scenario (b) >10 km from Eskom grid

